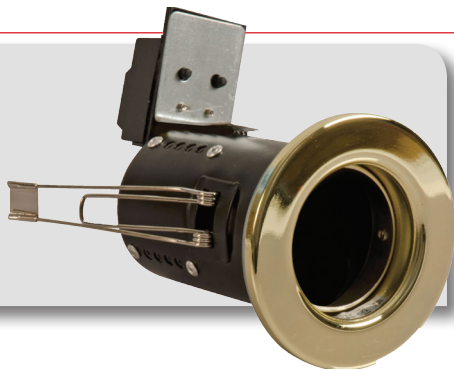


FIRE RATED DOWNLIGHTS

FOR MODEL: FGFAB-1, FGFW-1, FGFS-1, FGFC-1, FGFB-1, FGFSDCS, FGGAB-1 FGGW-1, FGGS-1, FGGC-1, FGGB-1, FGFWDC, FGFSDC, FGFDCDC, FGFBCDC, FGGWDC, FGGSDC, FGGCDC, FGGBCDC, FLF17-1, FLF18-1, FLF19-1, FLF23-1.

INTRODUCTION

The Pressed Steel and Die Cast Fire Rated Downlights have a fixed and tilt option and available in a variety of finishes.



SPECIFICATION



240V

IP20/
IP65

50/
60Hz

- Dimensions:
Pressed Steel Fixed: Ø: 85 x L1: 105 x L2: 133mm Cut out: Ø: 65mm
Pressed Steel Tilt: Ø: 85 x L1: 105 x L2: 133mm Cut out: Ø: 75mm
Die Cast Fixed: Ø: 92 x L1: 105 x L2: 126mm Cut out: Ø: 75mm
Die Cast Tilt: Ø: 104 x L1: 105 x L2: 133mm Cut out: Ø: 90mm
- Maximum wattage: 35W(flammable surfaces)
50W (non -flammable surfaces)
- Recommended Lamp Type: GU10 Halogen with aluminium reflector / CFL / LED

BOX CONTENTS

- Butterfly springs
- Downlight

SAFETY WARNING

- The installation should be carried out by a qualified electrician in compliance with the current edition of the IEE Wiring Regulations.
- Prior to installation carry out the necessary risk assessment considering the people who could be at risk, the level of risk and the precautions required to control the risk.
- Ensure that the circuit supply is isolated either by the circuit supply fuse being removed or the applicable circuit breaker being turned off before installation or any maintenance.
- Check the total load on the circuit including the luminaire does not exceed the rating of the circuit cable, fuse or circuit breaker.
- If the fitting incorporates control gear, ensure careful sizing to avoid instances of nuisance tripping of the protective device used in the installation.
- Follow the provided installation instructions, using the fixings supplied or recommended.

FIRE RATED DOWNLIGHTS

FOR MODEL: FGFAB-1, FGFW-1, FGFS-1, FGFC-1, FGFB-1, FGFSDCS, FGGAB-1 FGGW-1, FGGS-1, FGGC-1, FGGB-1, FGFWDC, FGFSDC, FGFDCDC, FGFBCDC, FGGWDC, FGGSDC, FGGCDC, FGGBCDC, FLF17-1, FLF18-1, FLF19-1, FLF23-1.

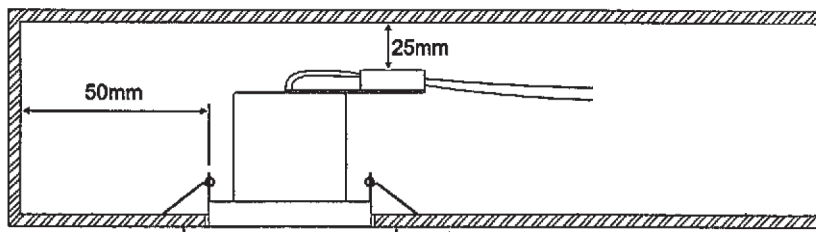
INSTALLATION INSTRUCTIONS

1. Check that the correct lamp type and wattage is fitted.
2. Ensure all electrical connections are tight with no loose strands.
3. Do not install the downlight into new plaster or lamp areas.
4. Ensure there is adequate free air circulation of at least 50mm around the downlight, all fittings run hot. It is the installer's responsibility to consider any fire risks and take appropriate precautions.
5. The downlights must not, under any circumstances, be covered with any insulation materials and downlights must not be installed close to flammable materials.
6. The nearest illuminated surface must be at least 0.5m from the front of the downlight.

35W - If this downlight is to be mounted on a normally flammable surface e.g. A wooden ceiling or a material based on wood, the maximum lamp rating is a 35W. Aluminium reflector lamps are recommended.

50W - DO NOT use 50W lamps in these downlight if it is to be mounted on normally flammable surfaces. Aluminium reflector lamps are recommended.

7. Select the required position for the downlight ensuring the clearances shown in the diagram below are observed. Beware of joists, water pipes and electric cables, cut a hole in the ceiling for the type of downlight to be fitted (cut out sizes are shown on page 1). For IP65 downlights, ensure the contact area between the fitting and the contact surface is smoothed off.



FIRE RATED DOWNLIGHTS

FOR MODEL: FGFAB-1, FGFW-1, FGFS-1, FGFC-1, FGFB-1, FGFSDCS, FGGAB-1 FGGW-1, FGGS-1, FGGC-1, FGGB-1, FGFWDC, FGFSDC, FGF CDC, FGF BDC, FGGWDC, FGGSDC, FGGCDC, FGG BDC, FLF17-1, FLF18-1, FLF19-1, FLF23-1.

8. Connect the downlight to the terminal block:
Blue to Neutral
Brown to Live, and Earth (where appropriate).
9. A suitable terminal block must be used in accordance with regulations.

BUTTERFLY SPRING INSTALLATION

10. The long legs with the flat metal plate of the butterfly springs should be nearest to the body of the downlight. See Figure 1.



Figure 1.

11. The downlight with the long legs parallel to the body should be fed into the prepared opening, See Figure 2.



Figure 2.

12. Continue to insert the fitting until the small leg of the butterfly spring nearly makes contact with the surface. See Figure 3.



Figure 3.



FIRE RATED DOWNLIGHTS

FOR MODEL: FG FAB-1, FGFW-1, FGFS-1, FGFC-1, FGFB-1, FGFSDCS, FGGAB-1 FGGW-1, FGGS-1, FGGC-1, FGGB-1, FGFWD, FGFSDC, FGFDC, FGFBC, FGGWD, FGGSD, FGGCD, FGGBC, FLF17-1, FLF18-1, FLF19-1, FLF23-1.

13. Grip the short legs and squeeze as you place into the cavity. See Figure 4.

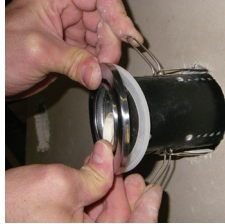


Figure 4.

14. Please see Figure 5 for how the rear of the downlight should look.

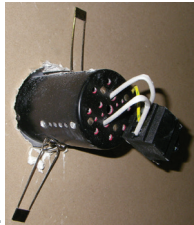


Figure 5.

15. Please see Figure 6 for how the completed installation should look.



Figure 6.

16. Ensure the lamp is correctly located in the lampholder. Switch on the power supply.



FIRE RATED DOWNLIGHTS

FOR MODEL: FGFAB-1, FGFW-1, FGFS-1, FGFC-1, FGFB-1, FGFSDCS, FGGAB-1 FGGW-1, FGGS-1, FGGC-1, FGGB-1, FGFWDC, FGFSDC, FGFDCDC, FGFBCDC, FGGWDC, FGGSDC, FGGCDC, FGGBCDC, FLF17-1, FLF18-1, FLF19-1, FLF23-1.

MAINTENANCE

- Replace failed lamps immediately. Allow the lamp and downlight to cool before replacing the lamp.
- Check that the correct lamp type and wattage is fitted. (35W on flammable surfaces, 50W recommended on non-flammable surfaces). Aluminium reflector lamps that produce forward heat are recommended.
- When this fitting comes to the end of its life or you choose to replace it, please do not dispose of it with your normal household waste. Please recycle where the facilities exist, check with your local authority or retailer for suitable options.

ADDITIONAL INFORMATION

- Aluminium reflector lamps are recommended for use in the downlights.
- Integrated intumescent material completely seals the downlight in the event of fire.
- IP65 rated downlights are protected against dust and jets of water. It is suitable for installation in locations containing a bath or shower as defined by the I.E.E wiring regulations, zones one, two and three where water jets are likely.
- Tested to BS476 Part 21, 22 and 23 (fire rating), suitable for 90 minute fire rated ceilings.

GUARANTEE

This product is guaranteed for a period of 1 year from the date of purchase. The guarantee is invalid in the case of improper use, tampering, removal of the Q.C. date label, installation in an improper working environment or installation not according to the current edition of the I.E.E. Wiring Regulations (BS7671). The guarantee is also invalidated if the luminaire has been Mega tested. Should this product fail during the guarantee period it will be replaced free of charge, subject to correct installation and return of the faulty unit. We do not accept responsibility for any installation costs associated with the replacement of this product. Your statutory rights are not affected. We reserve the right to alter specifications without prior notice.



RoHS

